

WALL PAINTINGS
FROM
ANCIENT SHRINES IN
CENTRAL ASIA



Indra Gandhi National
Centre for the Arts

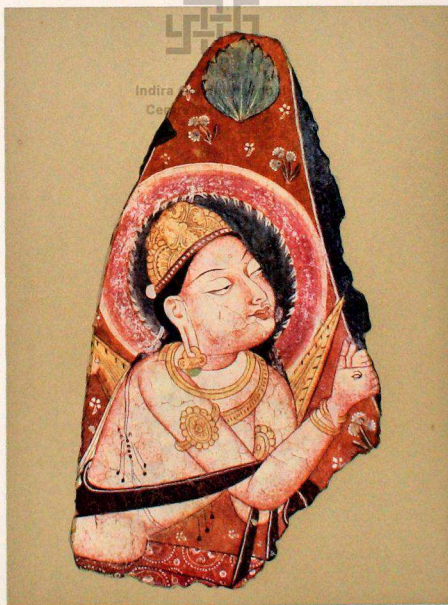
F. H. ANDREWS

WALL PAINTINGS
FROM
ANCIENT SHRINES IN CENTRAL ASIA

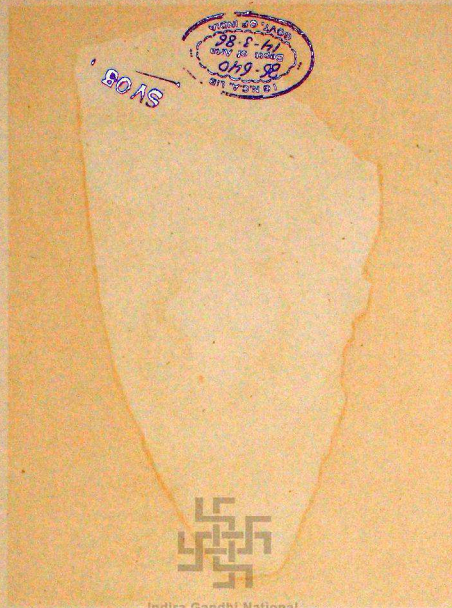
RECOVERED BY
SIR AUREL STEIN, K.C.I.E.

DESCRIBED BY
FRED H. ANDREWS, O.B.E.

PUBLISHED UNDER THE ORDERS OF
THE GOVERNMENT OF INDIA



LONDON
OXFORD UNIVERSITY PRESS
GEOFFREY CUMBERLEGE
1948



Indira Gandhi National
Centre for the Arts
57E
751.73

INDIRA GANDHI NATIONAL CENTRE FOR THE ARTS

INDIRA GANDHI NATIONAL CENTRE FOR THE ARTS

INDIRA GANDHI NATIONAL CENTRE FOR THE ARTS

INDIRA GANDHI NATIONAL CENTRE FOR THE ARTS



WALL PAINTING FROM MĪRĀN, SHRINE III



M. III. 005.

Height 11"



M. III. 0011.

Height 5½"



M. III. 006, 0037.

Width 6"



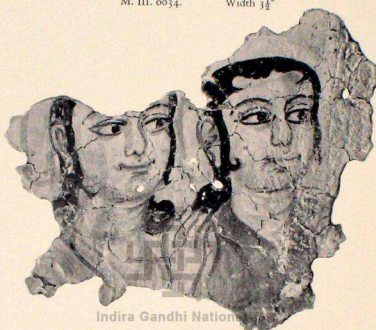
M. III. 0024.

Width 3½"



M. III. 0031.

Height 6½"



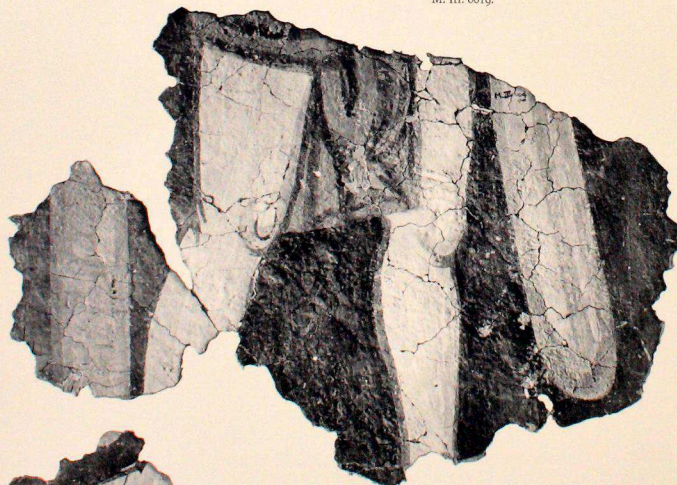
M. III. 0019.

Width 8½"



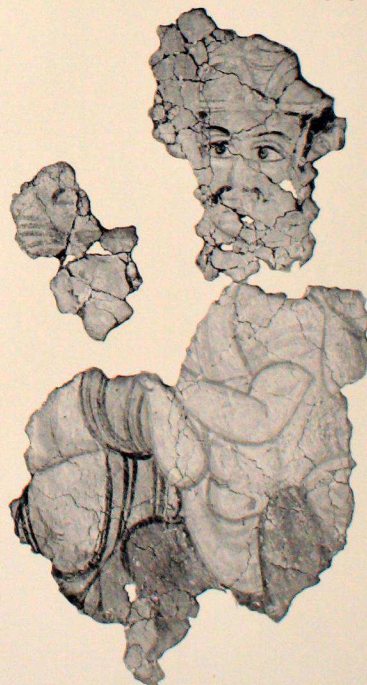
M. III. 0032.

Height 8½"



M. III. 004 etc.

Width 1' 6"



M. III. 0017, 0056

Height 1' 3"



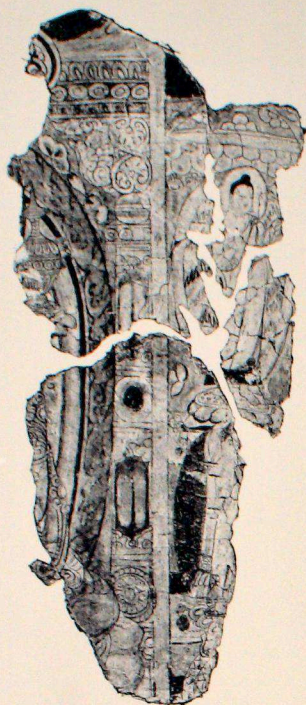
WALL PAINTING FROM MIRAN, SHRINE V



F. XII. 004.

Height 2'

WALL PAINTING FROM FARHÂD-BĒG-YAILAKI



KHA. i. E. 0047.

Height 2' 4"



BAL. 098.

Height 10 1/2"



F. XII. 008.

Height 1' 7"



BAL. 0200.

Height 1' 10"



F. XII. 007.

Height 1' 6"



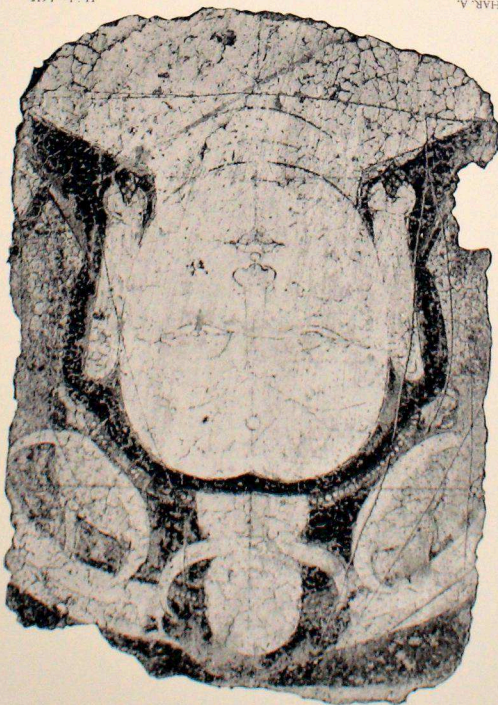
National Museum
New Delhi



HAR. C.

Height 1' 7"

Indian Garden
Centre for the Arts



HAR. A.

Height 1' 6 1/2"



HAR. D (probably from Balawaste).

Height 2' 6"



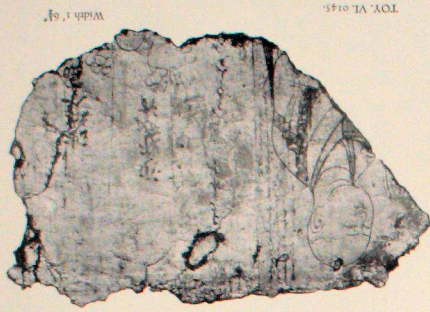
MI. xiii. 10.

Height 2' 2"

Gandhi National
Museum for the Arts

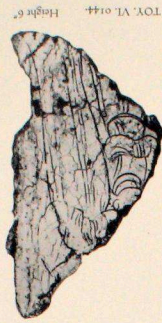
KAO. I. II. 077.

Height 3' 31"



TOY VI. 0143

Width 1.69



TOY VI. 0144

Height 6



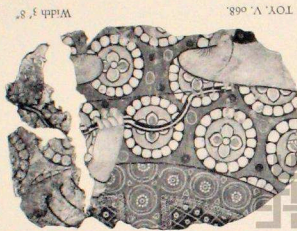
TOY VI. 02 ecc.

Height 10



TOY VI. 073 ecc.

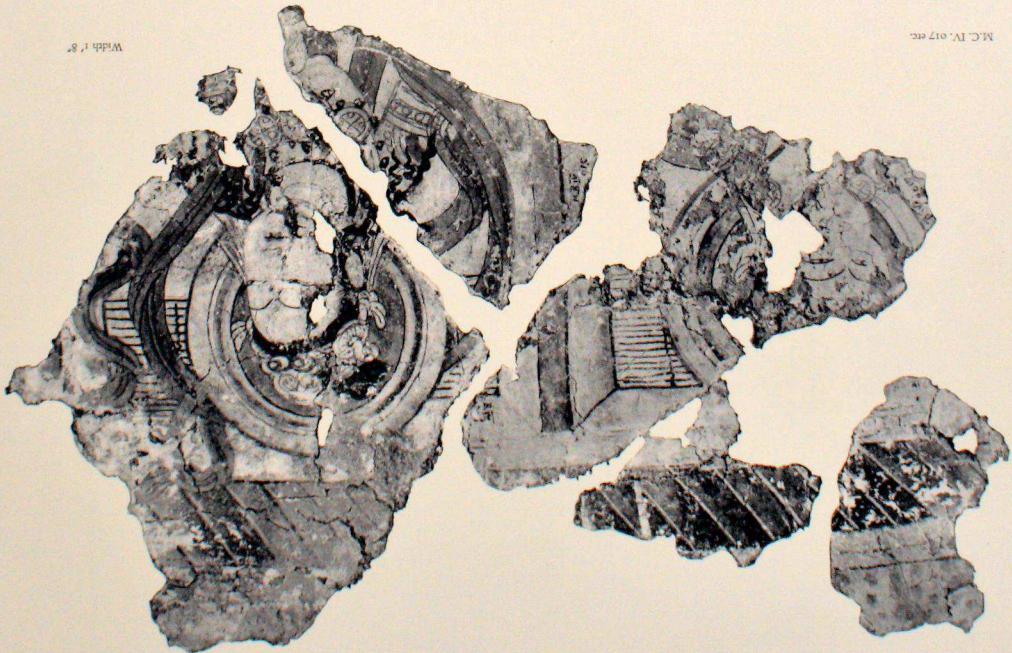
Height 10



TOY V. 068

Width 3.8

Indira Gandhi National
Centre for the Arts



M.C. IV. 017 ecc.

Width 1.8



TOY, IV, VII. CEILING AND WALLS.

Width 4' 0"

K.K. II. 0314.

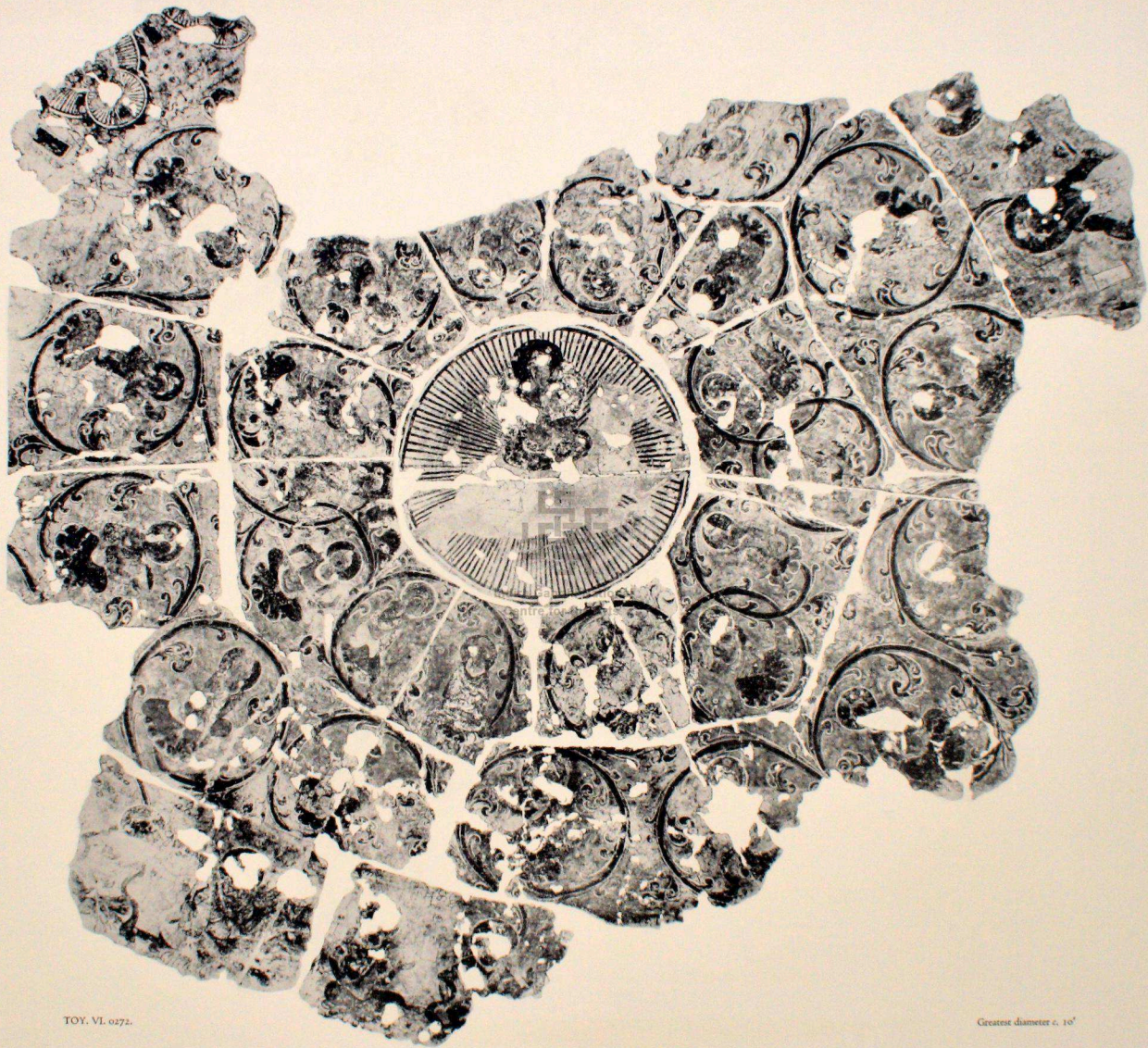
Height 2' 5"

HAR. G (copper fragment)+BAL. 0102.

Combined height 2' 10"

HAR. H.

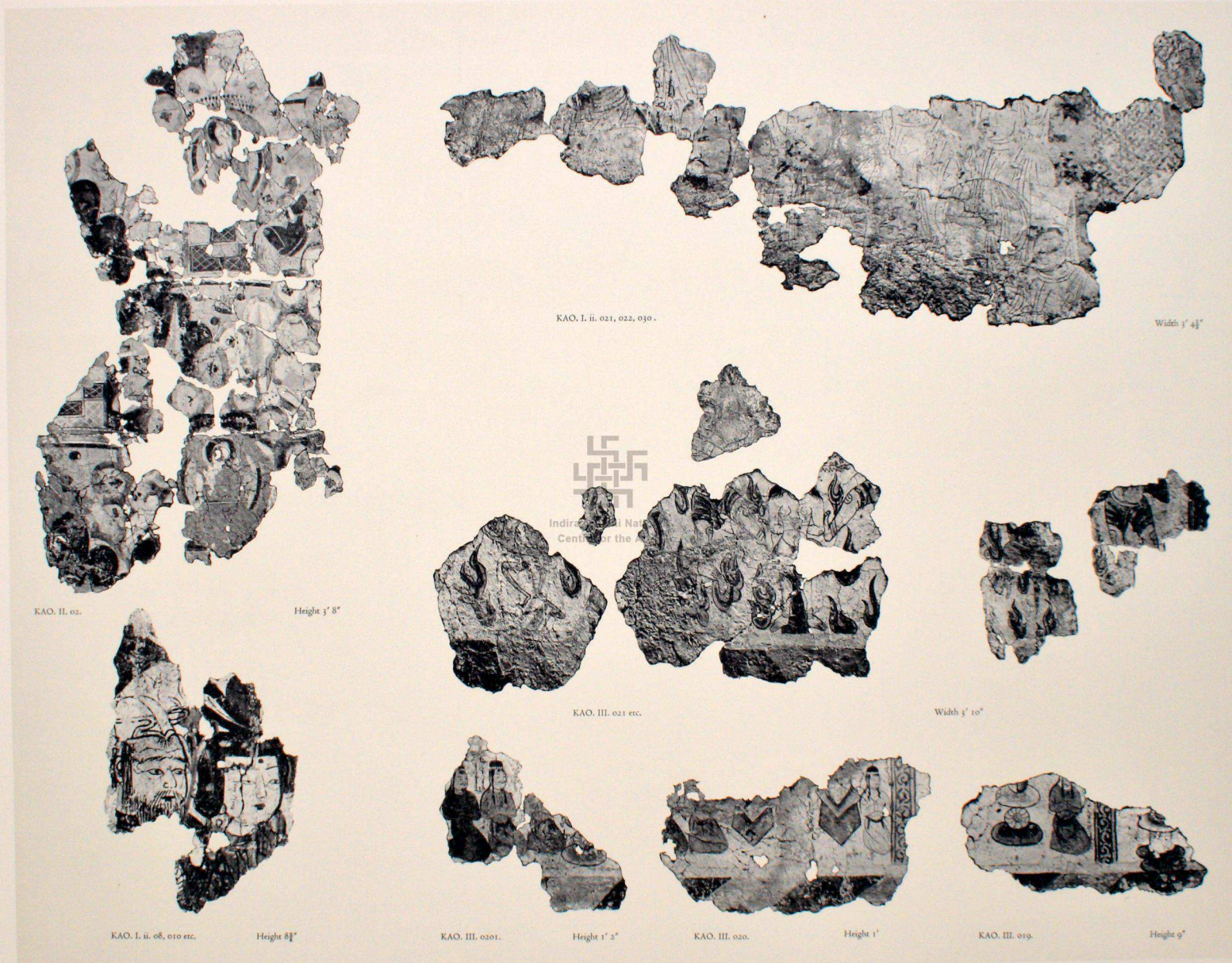
Height 1' 0"



TOY. VI. 0272.

Greatest diameter c. 10"

DOME PAINTING FROM TOYUK, SHRINE VI.



WALL PAINTING FROM KARA-KHŌJA, SHRINES I ii., II AND III.



BEZ. I. A-D.



the Gandhara vessel
as for this is

Height 3' 8", width 5' 3"



BEZ. I. M. N.



Height 3' 11"



BEZ. I. L.

Height 2' 01"



BEZ. i. H.I.

Height 3' 10"



Dr. B. R. Ambedkar
National Centre for the Arts



BEZ. i. G. 1, 2.

Height 3' 4"



BEZ. i. J.K.

Width 3' 3"



BEZ. iii. C-F.

Height 10' 6"



BEZ. iii. E.

Height 4' 5"



Indra Gandhi National
Centre for the Arts

BEZ. III. N-V.

Length 15' 9", Height 8' 10"

WALL PAINTING FROM BEZEKLIK, SHRINE III.





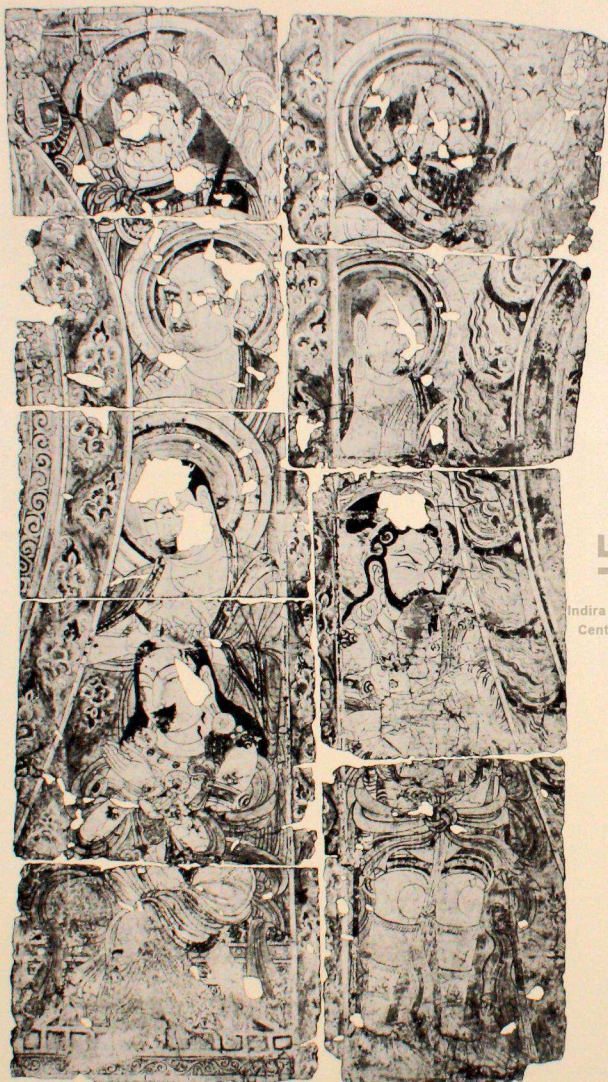
BEZ. iii. G-K.

Height 8' 2"



BEZ. iii. S-U.

Height 8' 10"



BEZ. iii. A.B.

Height 10' 6"



BEZ. iv. D.

Height 5' 11"



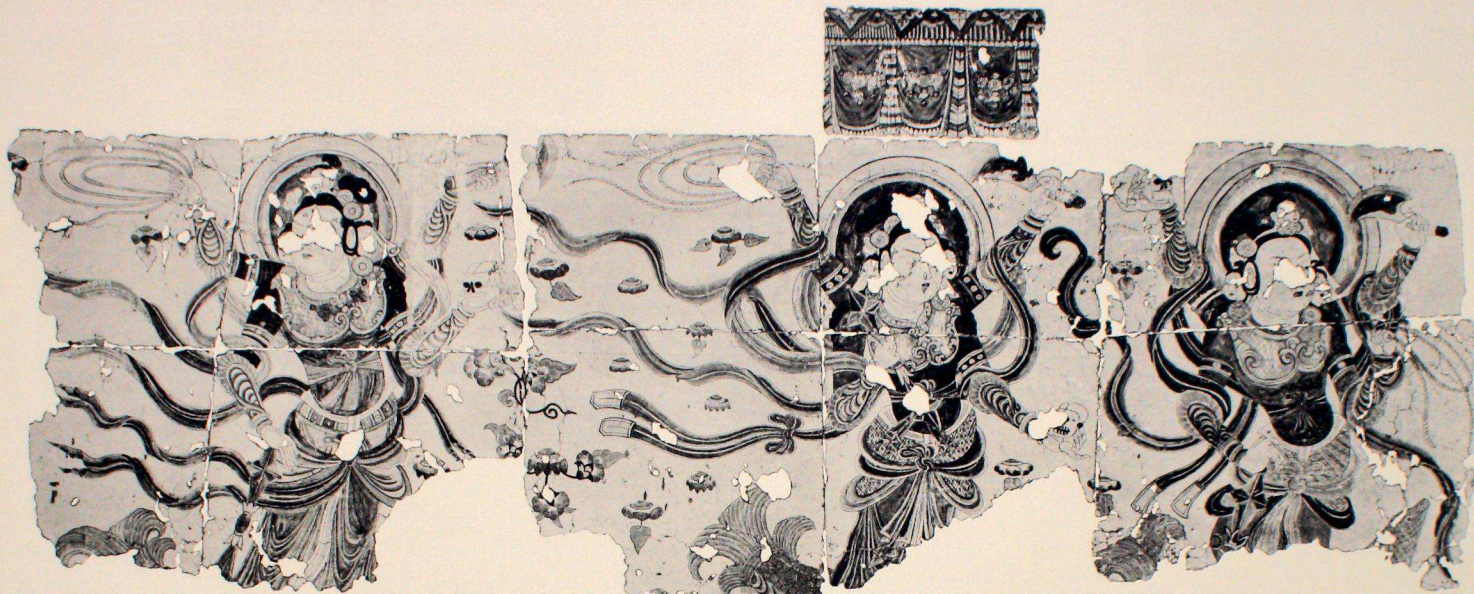
BEZ. xi. A-C.

Width 5' 0"



BEZ. v. F-H.

Height to lower edge of frieze 5' 8", width 6' 0"



BEZ. v. A-E.

Length 12'. Height to lower edge of frieze 4'

Indira Gandhi National
Centre for the Arts

BEZ. x. G.H.

Height 2' 3 1/4"

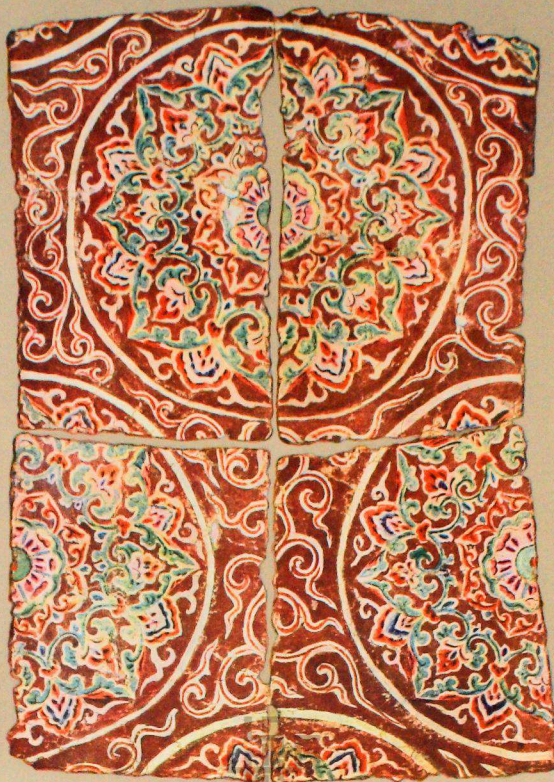


BEZ. v. I.

Height 2' 9"



FRIEZE.



BEZ. III. CEILING.

Width 2' 9"



FRIEZE.

Indira Gandhi National
Centre for the Arts

BEZ. v. J. K.

Height 3' 1"



BEZ. v. FLOORING.

Height 4' 8"



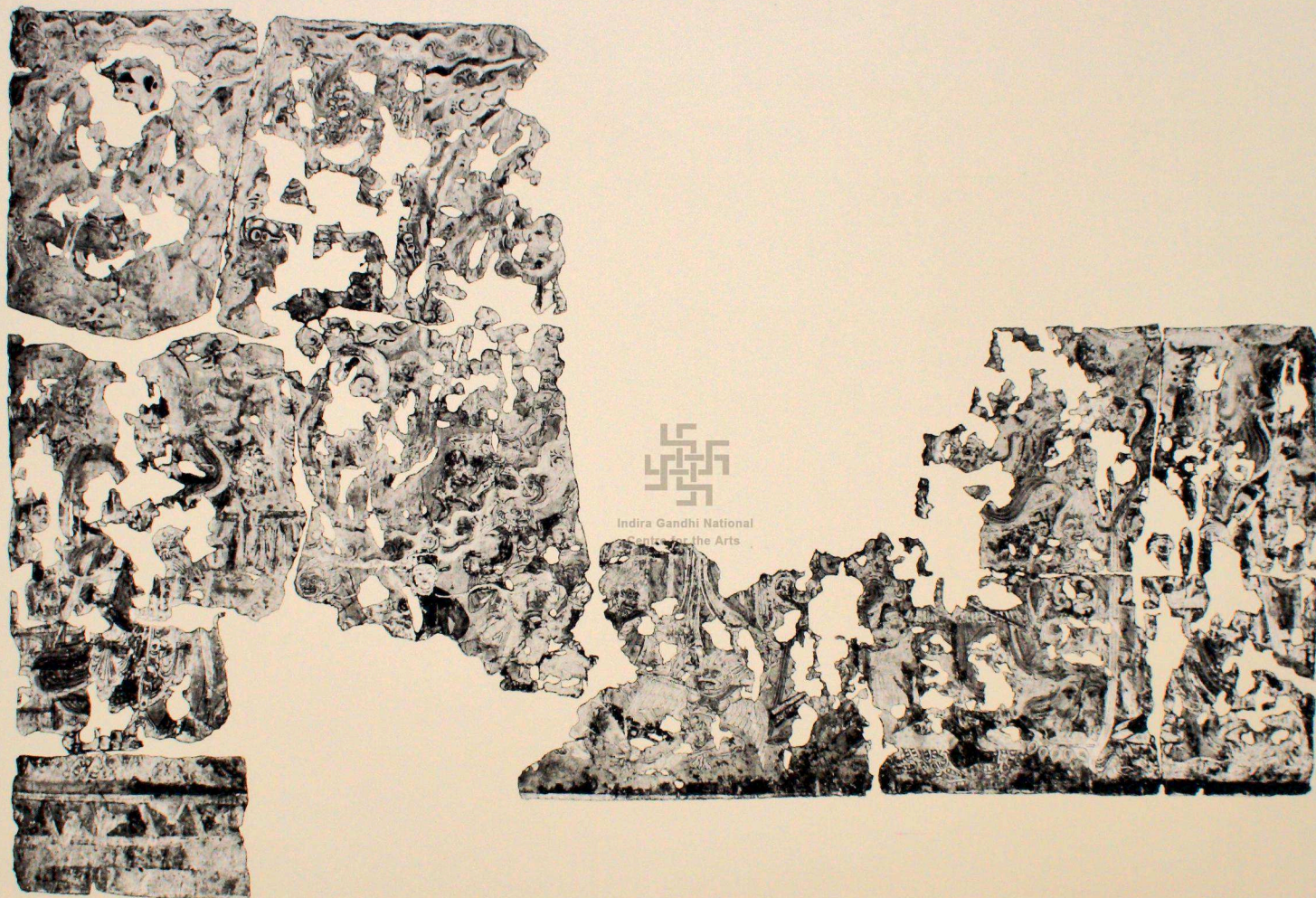
BEZ. iv. A-C.

Height 5' 5½"

Indira Gandhi National
Centre for the Arts

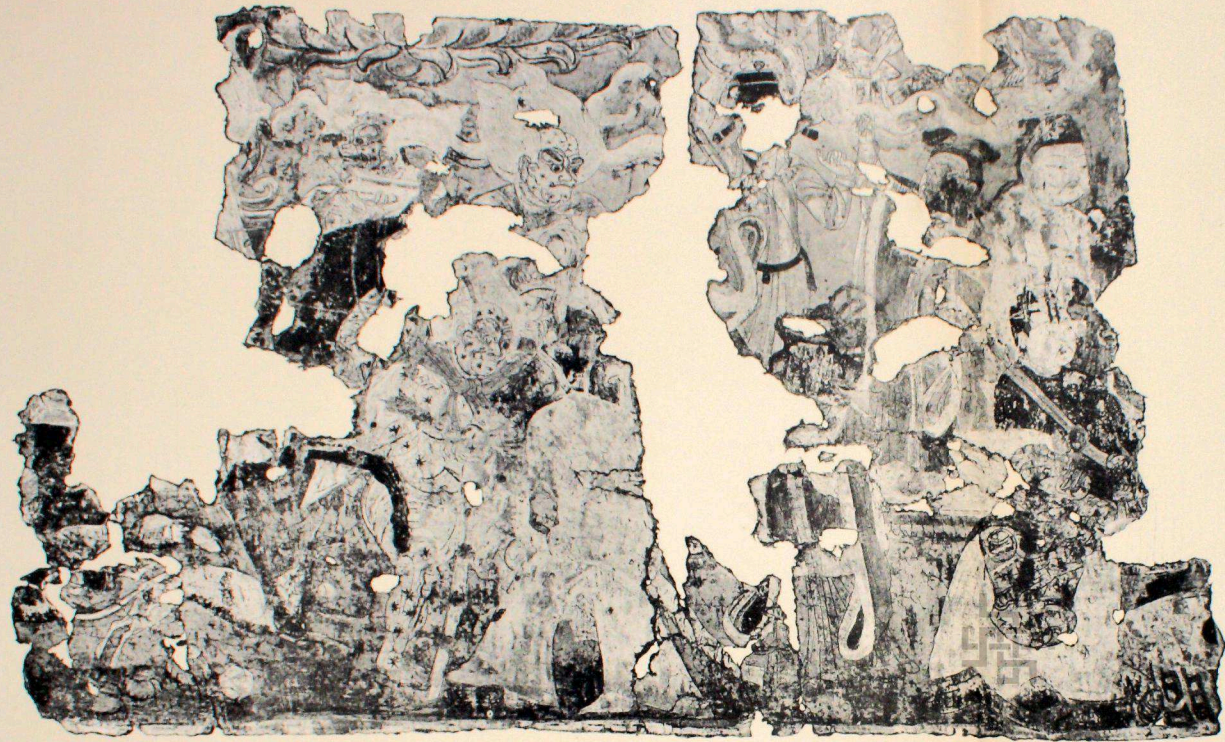
BEZ. vii. A-C.

Width 3' 10½"



BEZ. x. K-O.

Length 8' 10". Greatest height 6'



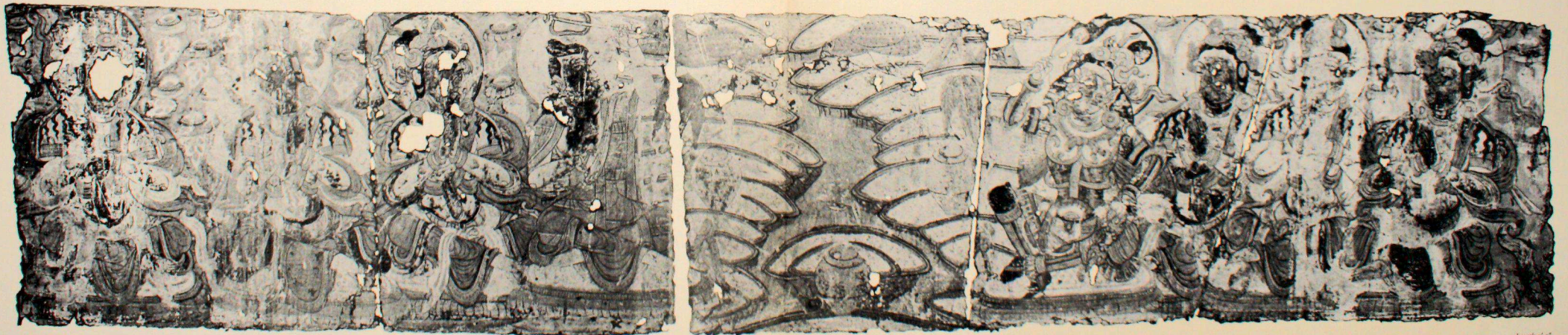
BEZ. x. P.Q.



BEZ. x. N.O.

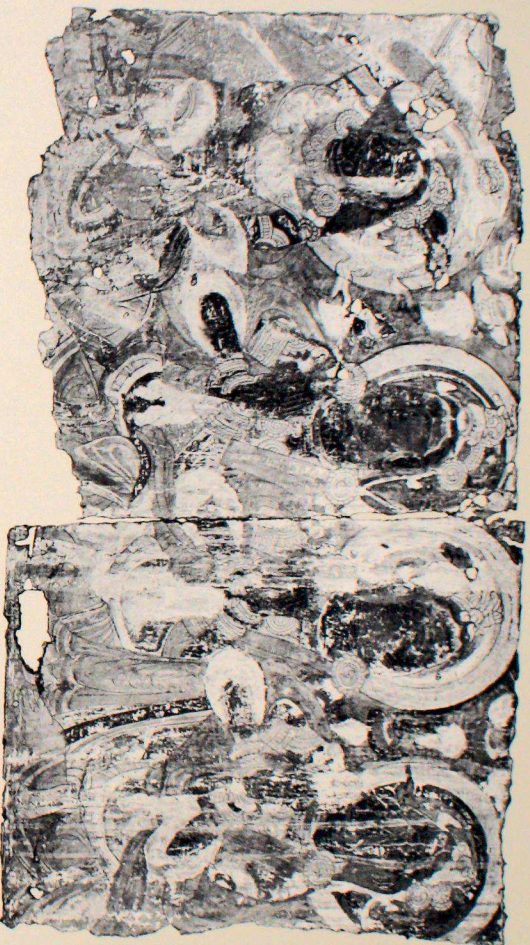
Width 1' 7"

Length 1'



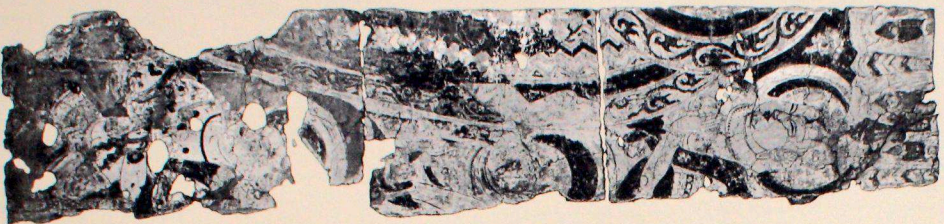
BEZ. x. D-F, 11

Length 1' 2"



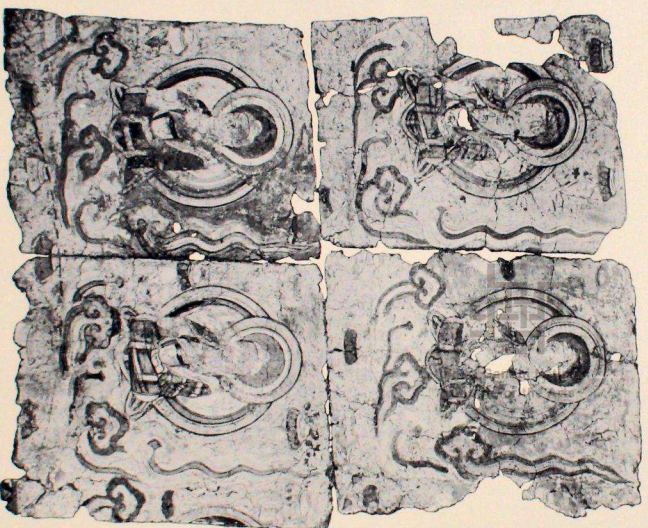
BEZ. x AB.

Length 7' 6"



BEZ. II. A.

Height 5' 6"



BEZ. XI. D. II.

Height 4' 3"



BEZ. x C.

Height 6' 6"



BEZ. xii. A-1.

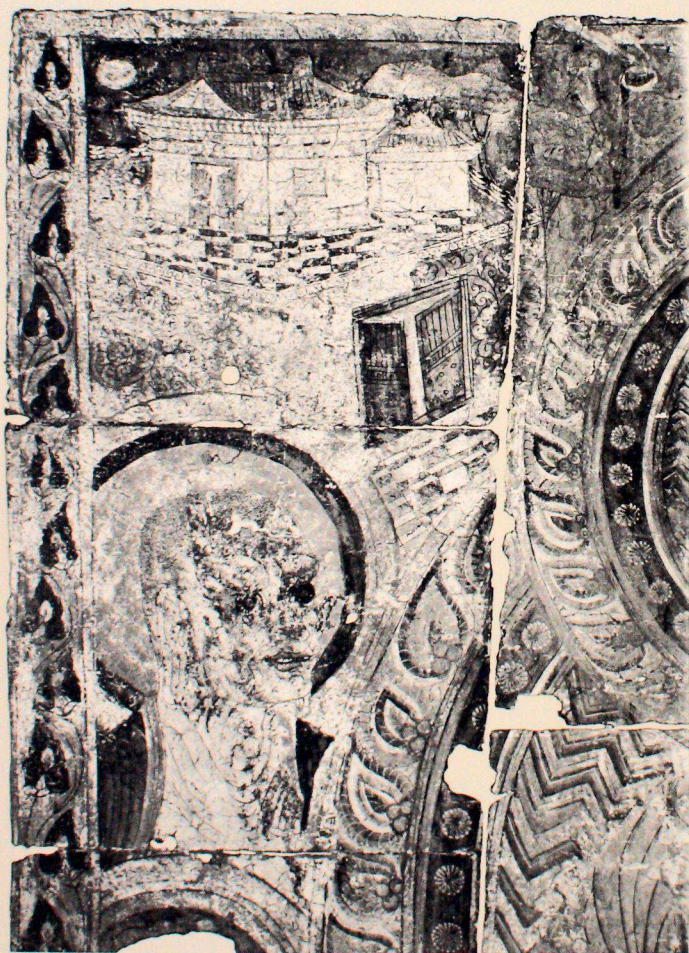
Height 11' 10", length 18' 0"

WALL PAINTING FROM BEZEKLIK, SHRINE xii



BEZ. xii. J-L.

Width 6'



BEZ. xii. I.

Height 3' 8"



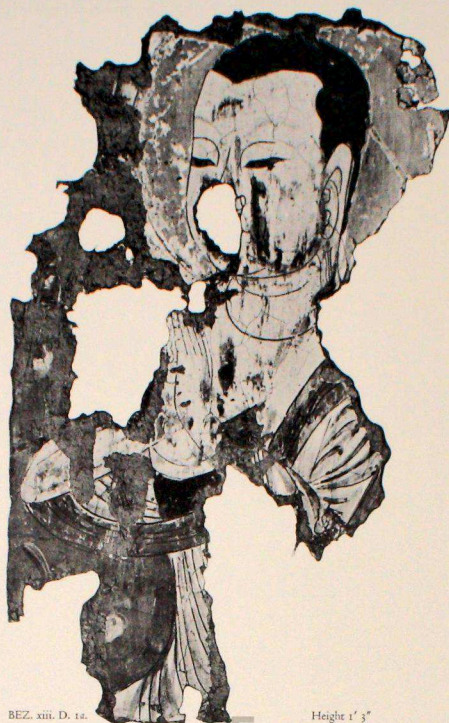
BEZ. xii. M.

Height 1' 8"



BEZ. xiii. C.

Height 1' 5"



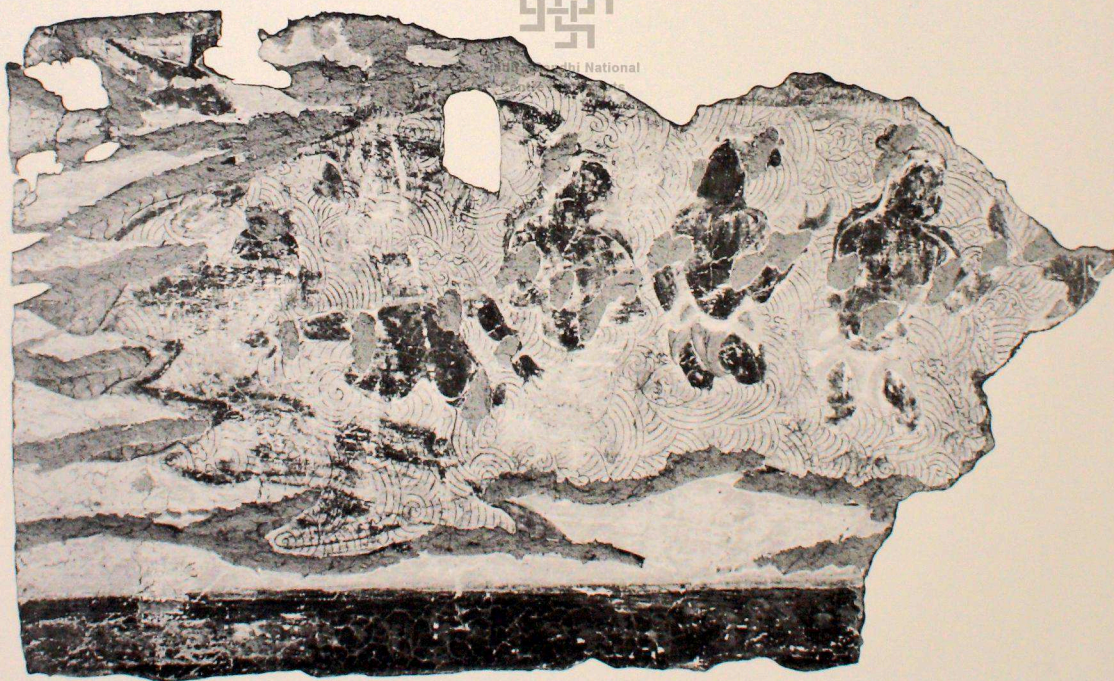
BEZ. xiii. D. 1a

Height 1' 3"



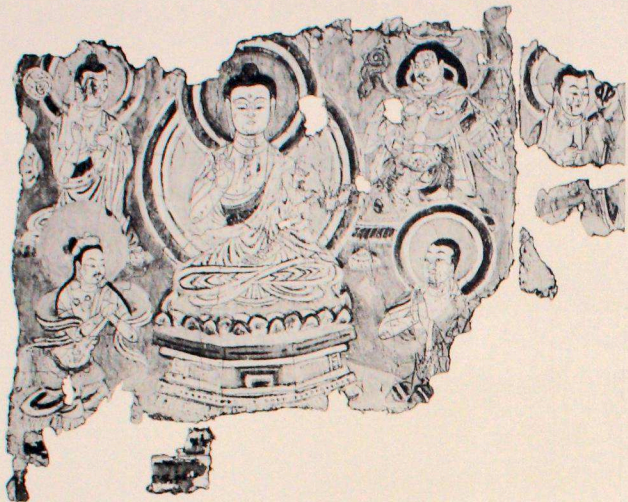
BEZ. xiii. D. 1b.

Height 9"



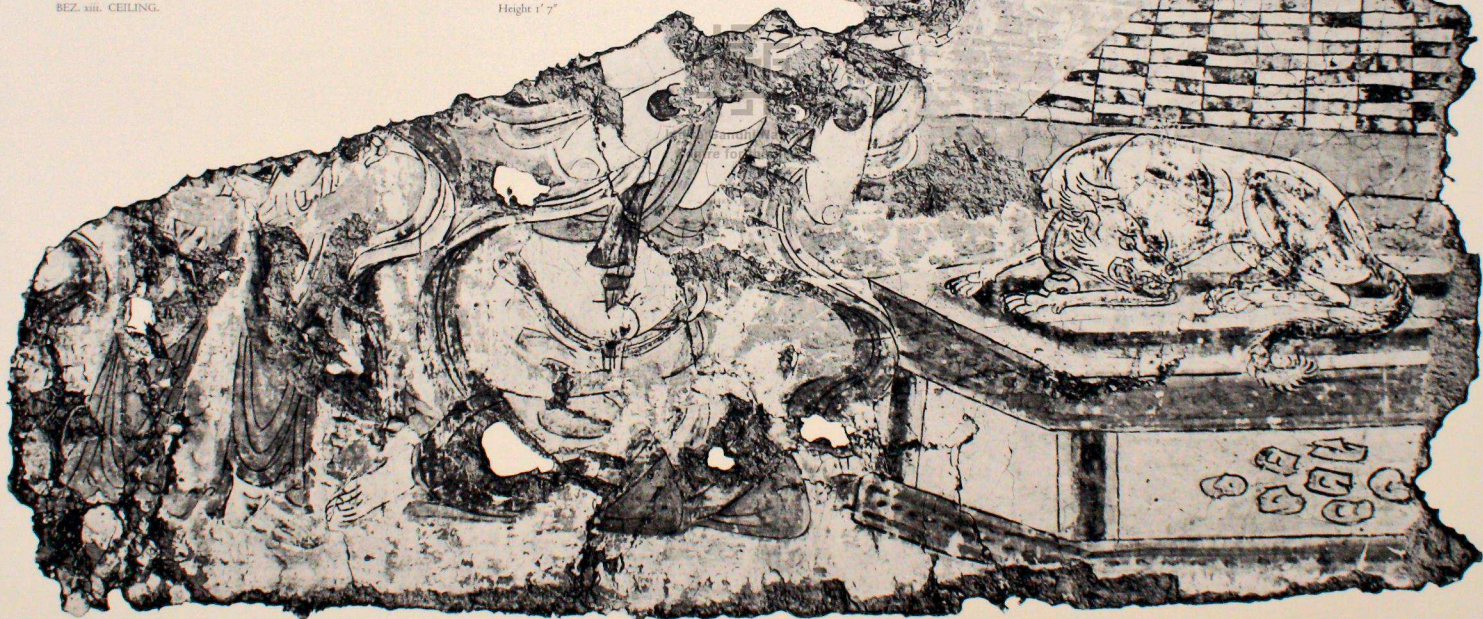
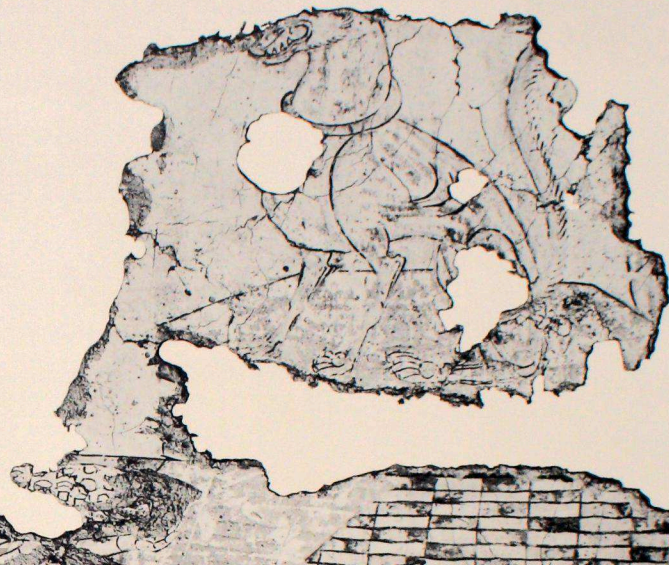
BEZ. xiii. A.

Width 1' 10"



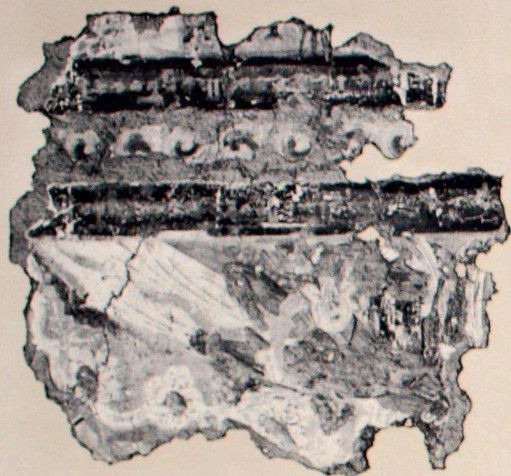
BEZ. xiii. CEILING.

Height 1' 7"

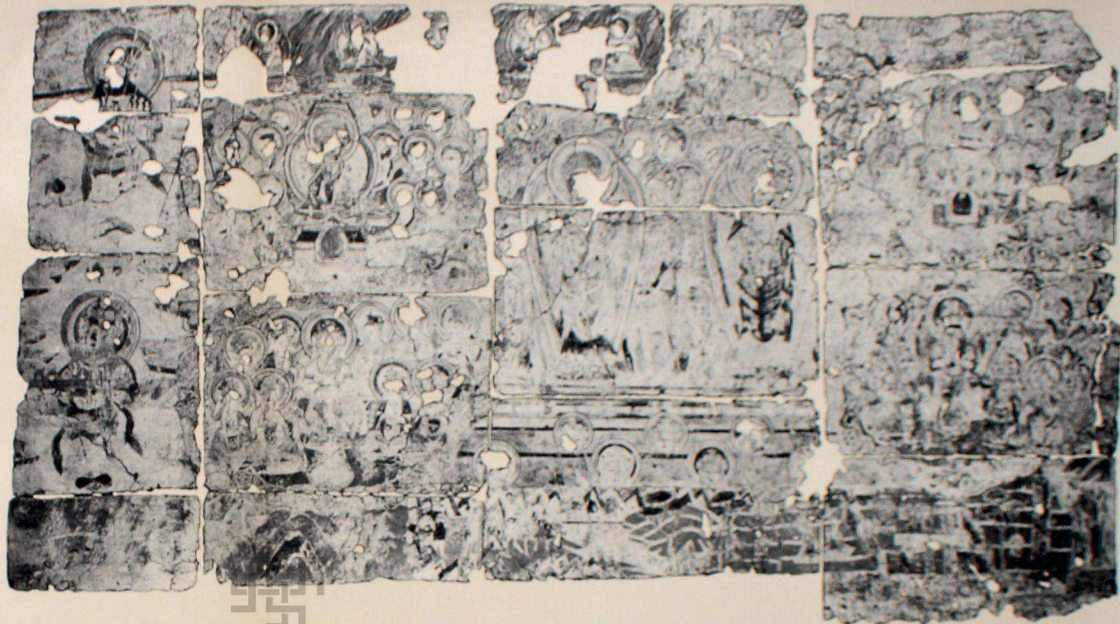


BEZ. xiii. D. 2.

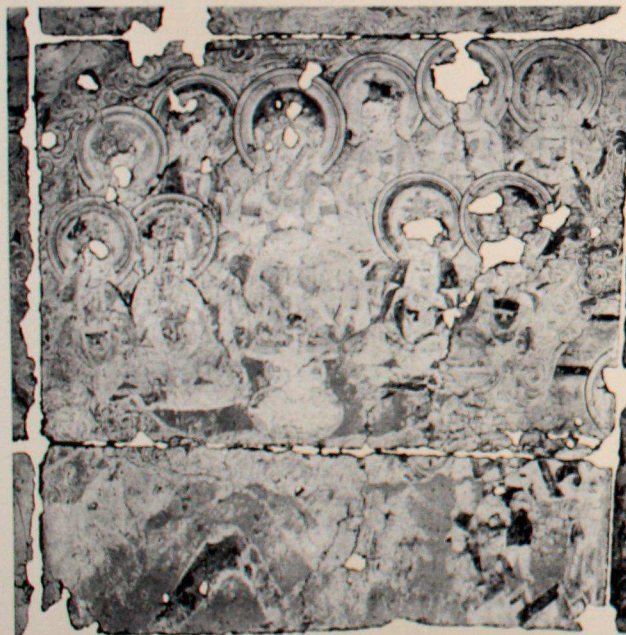
Width 1' 10"



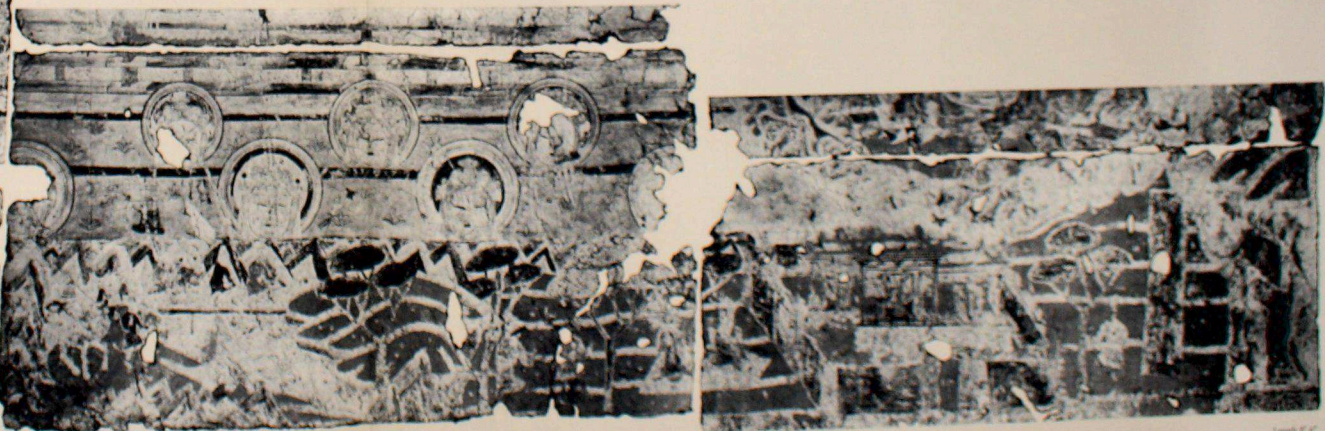
BEZ. no. 8. Height 7' 6"



BEZ. no. A-D. Length 12' 6"



BEZ. no. B-C.



Length 8' 6"

Indira Gandhi National
Centre for the Arts



Height c. 2' 6"

WALL PAINTING AND FIGURE IN STUCCO RELIEF, IN DANDĀN-OILIK, SHRINE D. II

